

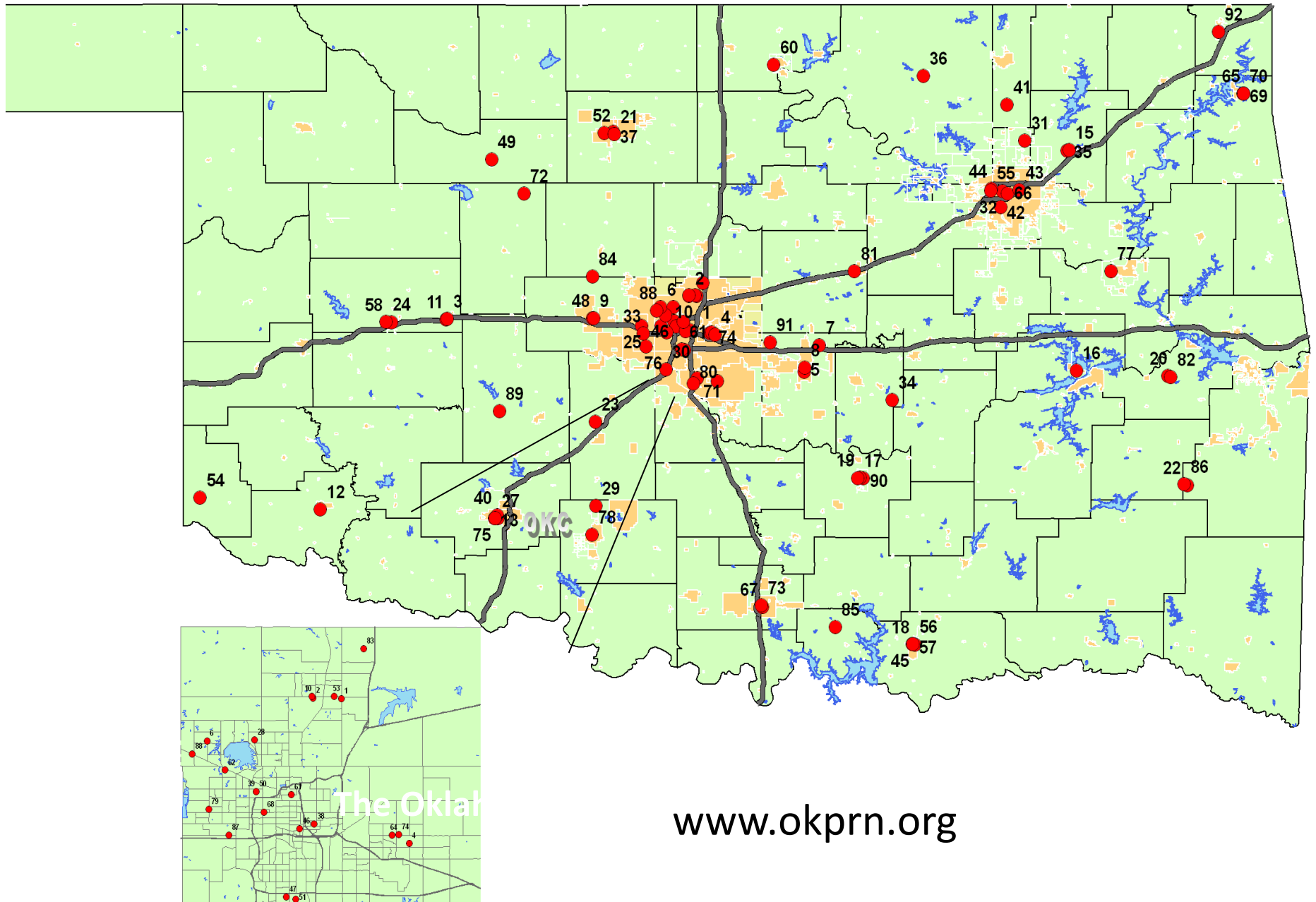
Infrastructure to Maintain Primary Care Transformation (IMPACT)

Jim Mold, MD, MPH
Department of Family and Preventive Medicine,
OUHSC-OKC

The Oklahoma Physicians Resource/ Research Network (OKPRN)

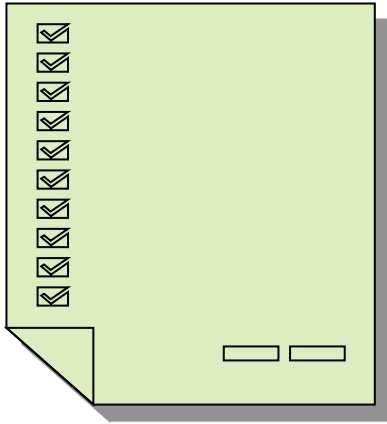
- Established in 1994
- Mission: Improve primary health care in Oklahoma by attracting, developing, and sharing resources and by conducting relevant practice-based research.
- Not-for-profit 501c3 charitable organization
- 238 clinician members in 139 practices throughout OK

OKPRN



www.okprn.org

Effective Implementation of Innovations in Primary Care



**Performance
Feedback**



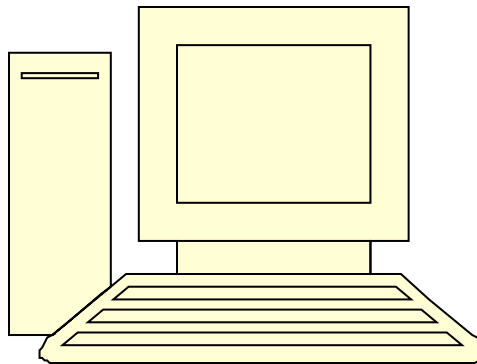
Literature and Exemplar
Methods

**Academic
Detailing**

Facilitation



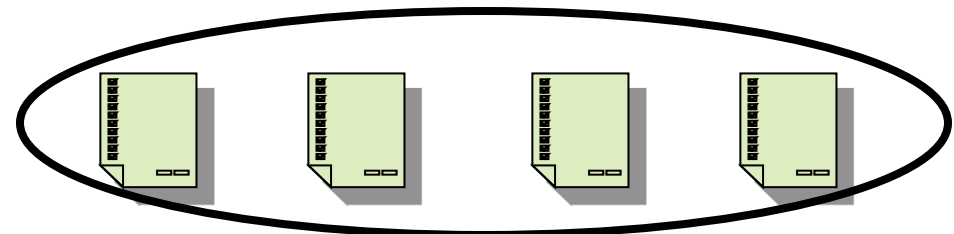
Local Learning Collaboratives



IT Support



**Practice Enhancement
Assistant**



Challenges and Revelations

- Both engagement and QI success depend heavily upon strength of relationships between the practice and the academic detailer and facilitator
- Cost could be reduced by embedding facilitators within communities
 - Longitudinal relationships
 - Less travel time/cost
- That's Cooperative Extension

Other Realizations

- 34% of deaths are the result of four unhealthy behaviors
 - Overeating and unbalanced diets
 - Insufficient physical activity
 - Use of tobacco products
 - Abuse of alcohol
- These behaviors can only be modified by the coordinated efforts of primary care, public health, mental health, and other community partners.
 - These groups are most likely to collaborate when working from a common budget

Other Realizations (continued)

- A great deal of money is currently being spent on ineffective efforts to improve health and health care
 - Use of ineffective approaches
 - Lack of involvement/alignment of key stakeholders
 - Inadequate relationships between those wanting improvement and identified beneficiaries
- Most available resources never make it to the groups in the best position to implement changes because they are not visible to the funders
 - Lack of a cohesive, system-wide infrastructure
 - Lack of responsive fiscal entities

The Importance of Local Control

- Every community is different; only those living in the community have a handle on its uniqueness
 - Unique needs, resources, opportunities, personalities, and politics
- Change only occurs when those impacted are involved in deciding what to change and how to go about it, and are intimately involved in and committed to the change process.

Oklahoma Building Blocks

- Academic health centers (3) and Family Medicine residency programs (12)
- The Area Health Education Centers (4)
- Turning Point Partnerships (76)
- Sooner Success coalitions (10)
- The Oklahoma Healthy Aging Initiative (OHAI)
- OHCA
 - Practice facilitators (6) and care managers (?)
 - Health access networks (3)
- OFMQ
 - HIT Regional Extension Center (9 facilitators)
- SMRTNet – Health information exchange

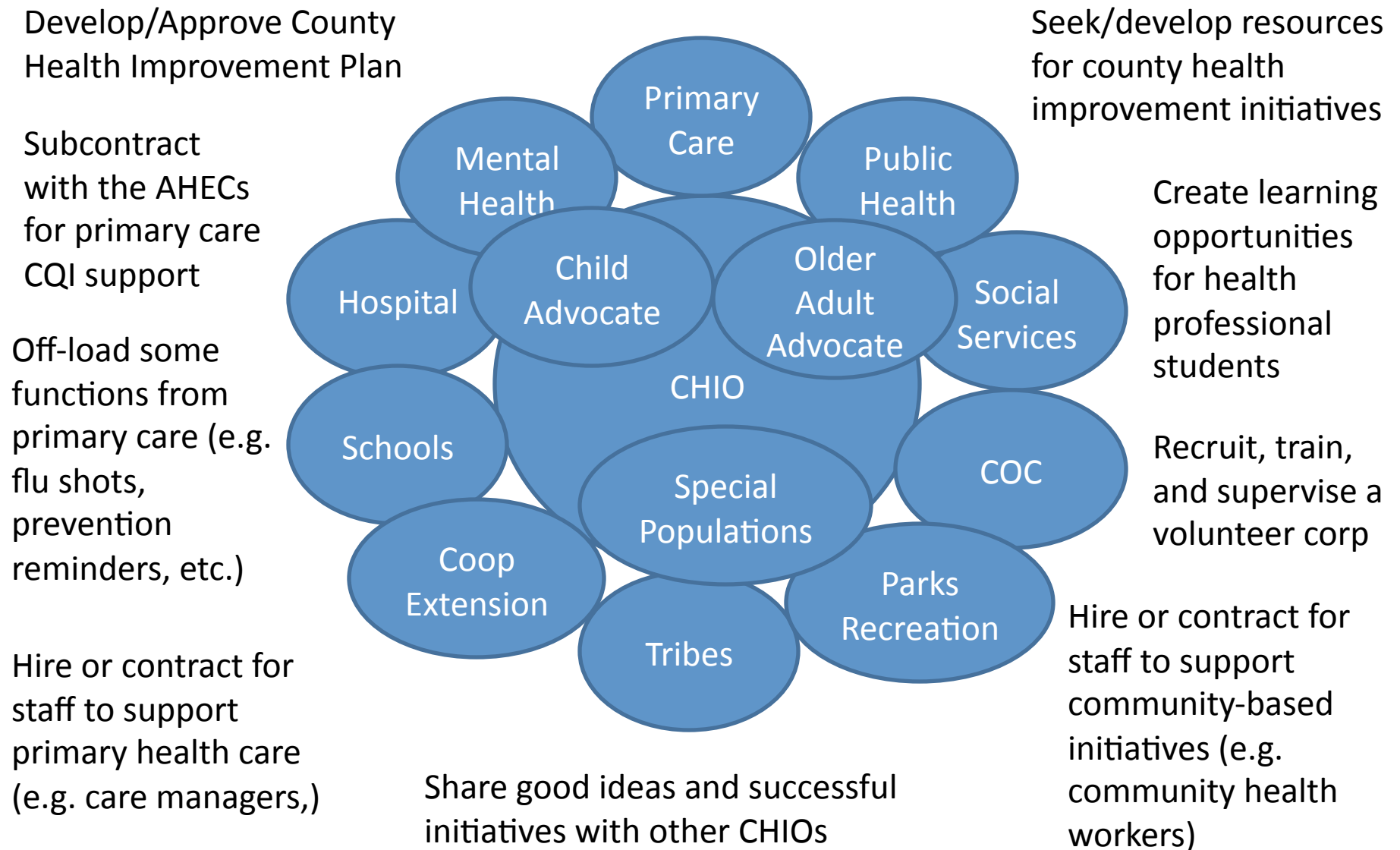
An Extension System for Health and Health Care

- Concept of “extension” caught on quickly
 - HIT Regional *Extension* Centers
- Affordable Care Act
 - Section 5405: Primary Care Extension Program
 - Authorized but funding not appropriated
 - Assigned to the Agency for Healthcare Research and Quality (AHRQ)
- AHRQ RFA: IMPaCT
 - 4 awards: NC, PA, NM, and OK
 - \$1 million each over two years (started 9/30/2011)
 - Dissemination to 12 additional states (3 each)
 - Arkansas, Missouri, and Colorado

Primary Care Extension in Oklahoma

- State Hub: The Public Health Institute of Oklahoma (PHIO), a state-level 501c3
- County Health Improvement Organizations (CHIOs) built from existing coalitions (e.g. Turning Point, Sooner Success, etc.) with certification through PHIO
 - Mission: Improve the health of citizens of county
- AHECs as Regional Coordinating Centers connecting CHIOs to academic resources

Composition and Functions of a CHIO



Funding

- Sustainable funding
 - Health insurance companies/agencies through Minimum Risk Ratio
 - ?? State and local government funding
- Project-specific funding
 - CDC, HRSA, CMS, AHRQ, NIH, PCORI, TSET, foundations, etc. etc.

Examples

- Vermont's Blueprint for Health
- Community Care of NC
- OHCA's Health Access Networks
- Canadian County experience
- Muskogee County opportunity

Questions